

Seventh-Day Adventist® Church

North New Zealand
Statement of Service
Performance Report
for the Year Ended 30 June 2025

Registered Charity No. CC42024

President's MESSAGE

What you're about to read in this report highlights a church united in mission. A community of faith determined to live out the call of Jesus to Connect, Grow, and Multiply. These three words summarise the heart of our shared vision.

Across Aotearoa New Zealand, our 122 congregations are on a journey toward becoming centres of compassion, learning, and transformation. What follows in these pages is a snapshot of that mission in action - stories of ordinary people, inspired by the Spirit of God, making an extraordinary difference.



Mission & VISION

This past year has been one of hope, momentum, and practical impact across the North New Zealand Conference of the Seventh-day Adventist Church (NNZC). As a registered charitable

organisation, our purpose is to serve people and communities in ways that bring connection, growth, and renewed hope. Our vision, Connect, Grow, Multiply, guides every aspect of our work:



Connect

Building meaningful relationships with people from all walks of life.



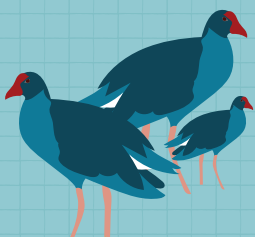
Grow

Supporting personal and community development in ways that strengthen resilience, wellbeing, and faith.



Multiply

Equipping and empowering people to serve others and multiply the good they have received.



This vision has come to life in diverse ways over the past 12 months...

Our churches and ministry teams are *involved* with their local communities in many and varied ways:

Auckland *Korean* Adventist Church

Visits lonely elders with music, helps immigrants settle, and restores dignity to struggling households.

The *Brazilian & Hispanic*

Adventist congregations are bringing prayer and hope to inmates and police at Waikeria Prison.

Mizpah Adventist Church's

"Dorcas Ministry" cleans homes, yards and community spaces while delivering home-cooked meals to vulnerable families.

2024/2025

KAIKOHE

Bethany *Tongan* Adventist Church

Mobilises its youth group to feed the homeless and connect with those living on the streets.

East Tamaki *Cook Islnds* Adventist Church

Opens its building as a "home away from home" for grieving families and those on referral from the Cook Islands. In addition, this church coordinates free winter home improvements in accordance with the healthy homes standards.

AUCKLAND

NEW PLYMOUTH

Brentwood Adventist Church

Provides weekly fresh produce and Monday night meals to ease financial strain and build connections.

Kaikōhe Adventist Church

Provides free clothing each week, serving soup in the town centre, and is preparing to minister within Northland Region Corrections Facility.

New Plymouth Adventist Church

Has supplied vegetables to a pay-what-you-can café that provides food to the homeless.

These are just a few examples of the positive impact being made by our approximately 122 congregations across the North New Zealand Conference, each contributing in unique ways to the health, wellbeing, and dignity of communities throughout Aotearoa New Zealand.

North Harbour Adventist Church

Regularly visits age care homes bringing joy and friendship through music, in addition to its free, weekly playgroup for young children accompanied by their mums.

Papakura Adventist Church

Invests consistently in community mental and physical health by running regular whole food cooking classes, Forgive to Live workshops and other topical health seminars.

Papatoetoe Adventist Church

Positively impacts its local neighbourhood through the free community dining opportunity as well as SOLID Kickboxing classes, specifically aimed at offering constructive engagement with at risk persons.

Tekoa & Taumarunui Adventist Churches

Offer free breakfasts, grief support, craft mornings, youth sports, and community lunches.

Stratford Adventist Church

Distributes soup, fruit, and hampers weekly to those in need.

West Auckland Chinese Adventist Church

Runs a "Storehouse of Love" food bank that began with no resources and now feeds dozens while drawing volunteers into faith discovery.

Whanganui Adventist Church

Hosts weekly breakfasts from surplus school food and visits rest homes with music and prayer.

NORTH HARBOUR

TAUMARUNUI

STRATFORD

WHANGANUI

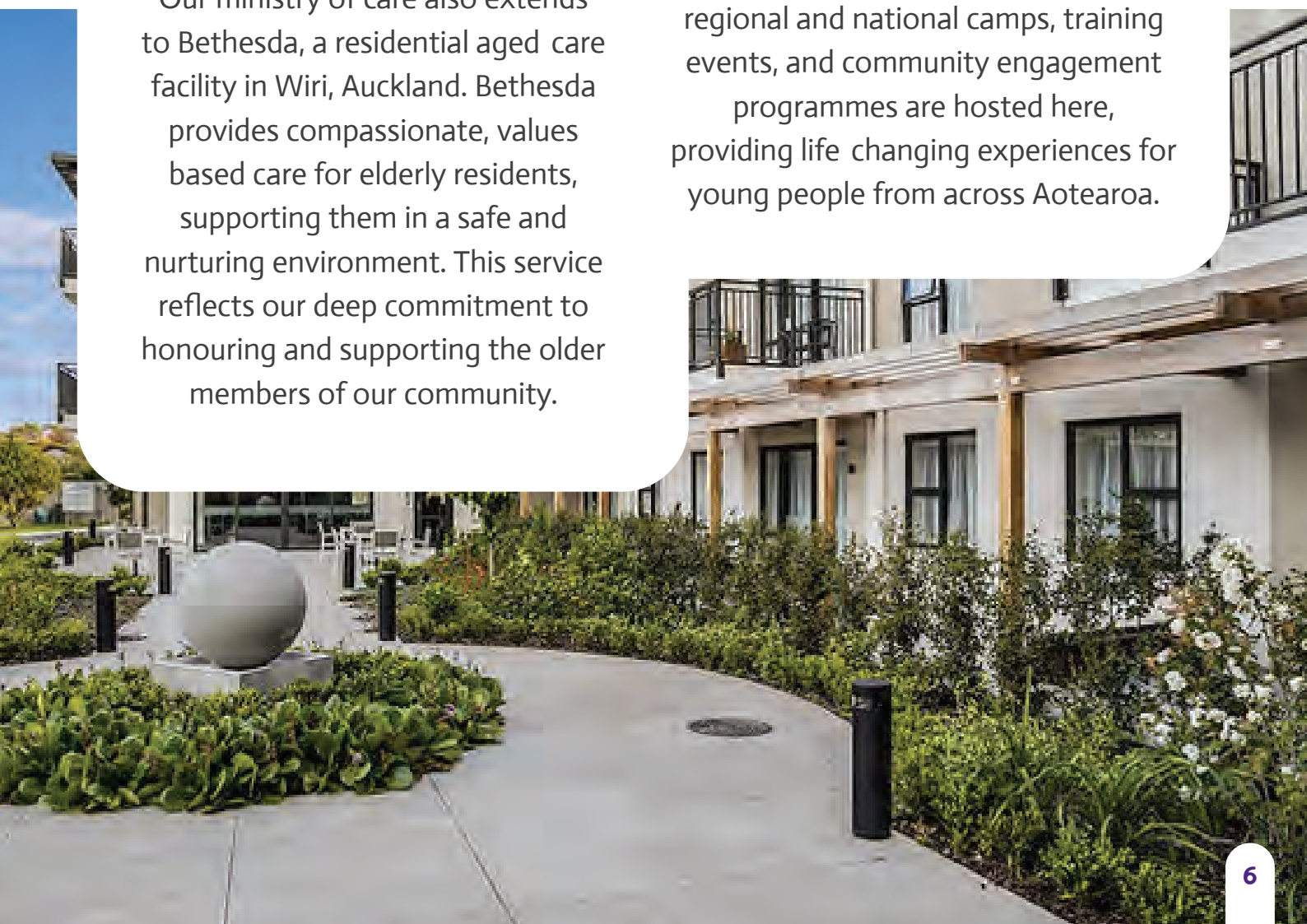


Tui Ridge **PARK**

Tui Ridge Park continues to be a key hub for children's and youth programmes, leadership development, and outdoor education. Many of our regional and national camps, training events, and community engagement programmes are hosted here, providing life changing experiences for young people from across Aotearoa.

Bethesda

Our ministry of care also extends to Bethesda, a residential aged care facility in Wiri, Auckland. Bethesda provides compassionate, values based care for elderly residents, supporting them in a safe and nurturing environment. This service reflects our deep commitment to honouring and supporting the older members of our community.

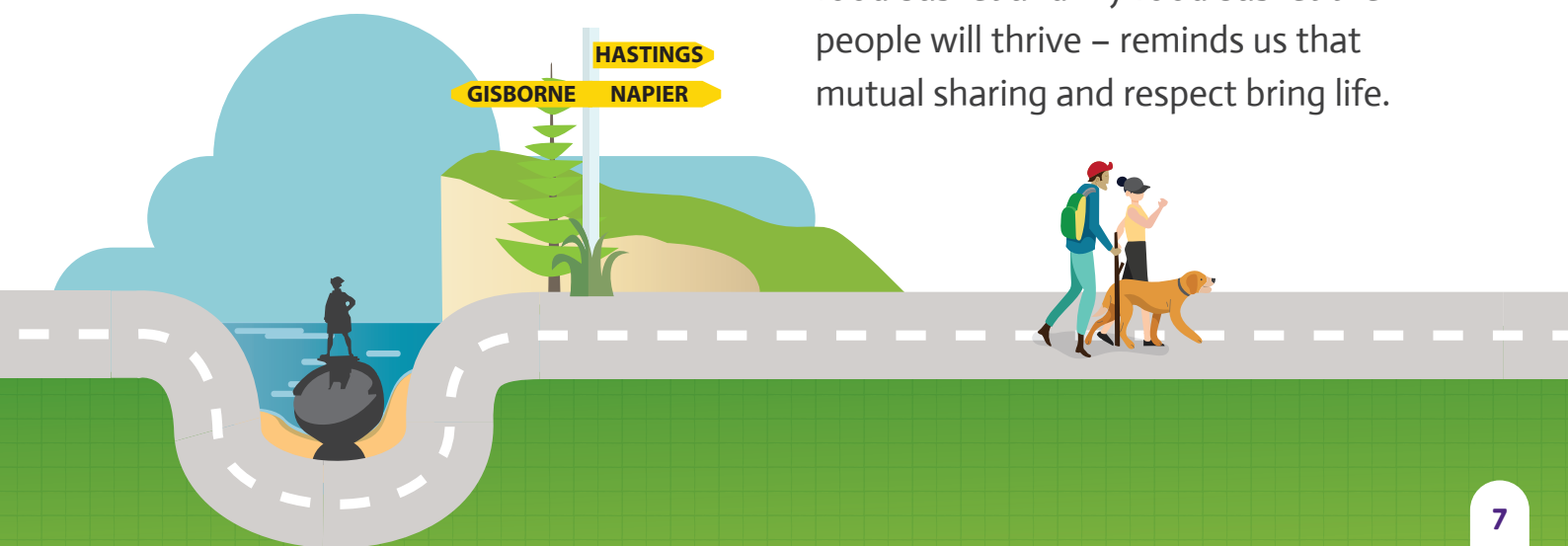


Adventist Book Centre

Our service to the community also includes the Adventist Book Centre (ABC), which provides books, resources, and media that inspire hope, encourage personal growth, and offer practical wisdom for life's journey. Through the ABC, people can access literature that strengthens family relationships, promotes health and wellbeing, nurtures faith, and supports lifelong learning. Many of these resources are chosen for their ability to help individuals and families navigate life with resilience and purpose.

Māori partnership and service

We are entering a fresh season of Māori partnership and service, full of potential and promise. This is a journey grounded in learning, listening, and shared vision, as we explore how best to connect and work alongside Māori communities in ways that are authentic and honours Te Tiriti o Waitangi. We are committed to deepening relationships, hearing the stories and aspirations of iwi and hapū, and embracing culturally grounded expressions of connection and service. Nāu te rourou, nāku te rourou, ka ora ai te iwi – with your food basket and my food basket the people will thrive – reminds us that mutual sharing and respect bring life.



With Gratitude

We acknowledge with gratitude the service of our previous leadership team — Bob Larsen (President), Rosalie McFarlane (General Secretary), and Kheir Boutros (Chief Financial Officer) who led through the previous quadrennium. We also recognise that Chiedza Ndlovu

stepped into the CFO role prior to the end of that term. At our most recent constituency meeting, the following leaders were appointed: Adrian Webster (President), Andrew West (General Secretary), and Chiedza Ndlovu (CFO).

Across Te Ika-a-Māui (North Island), many of our congregations now provide digital streaming of services. This allows those unable to attend in person, or who are not yet ready to connect to explore faith, and build relationships in their own time and space. These streaming options are creating meaningful touchpoints with people beyond our physical walls.



Ngā manaakitanga,

Behind every project and programme are people – volunteers, community leaders, staff, and supporters who make this work possible. Their compassion and commitment mean that many New Zealanders each year experience practical help, emotional support, and a safe place to belong through the ministries of NNZC.

The following pages share highlights and statistics that show the breadth of our service, from children's and youth programmes to community health

initiatives, education, and more. Our finance section outlines how we have stewarded the resources entrusted to us.

We remain deeply grateful for every person, organisation, and partner who has contributed to our mission. In the year ahead, NNZC will continue to connect with people, help them grow, and empower them to multiply good in their communities – building a stronger, healthier, and more hopeful Aotearoa.

Ngā manaakitanga,

Pr Adrian Webster
President

North New Zealand Conference
Seventh-day Adventist Church





OUR *Operational* MINISTRY ANCHORS

As we Connect • Grow • Multiply into a Spirit-led movement of flourishing disciple-makers in Aotearoa New Zealand.

1. Jesus at the Center.

We anchor all that we do in a deep, personal relationship with Jesus Christ. Every ministry initiative, leadership decision, and church activity must point people to Jesus as Saviour, Lord, and soon-coming King.

2. Welcoming the Holy Spirit.

We actively seek the presence, power, and guidance of the Holy Spirit. We long to see revival and transformation, recognising that only the Spirit can empower us to bear fruit and fulfil the Great Commission.

3. Building Relational Bridges.

We prioritise meaningful relationships with people in our communities. Through acts of compassion, service, and authentic friendship, we aim to create safe

spaces where spiritual conversations and gospel encounters can naturally take place.

4. Encouraging Faithful Stewardship.

We call every member to be a faithful steward of God's gifts—time, talents, resources, and finances. Stewardship is an act of worship and a practical expression of our trust in God and commitment to His mission.

5. Multiplying Disciple-Makers.

We are shifting from a ministry model where pastors are the primary doers to one where pastors train and equip members to become disciple-makers. This is essential for mobilising a multiplying movement of everyday believers who live on mission with Jesus.



This Year IN PICTURES



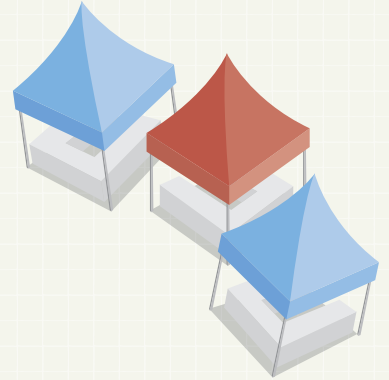




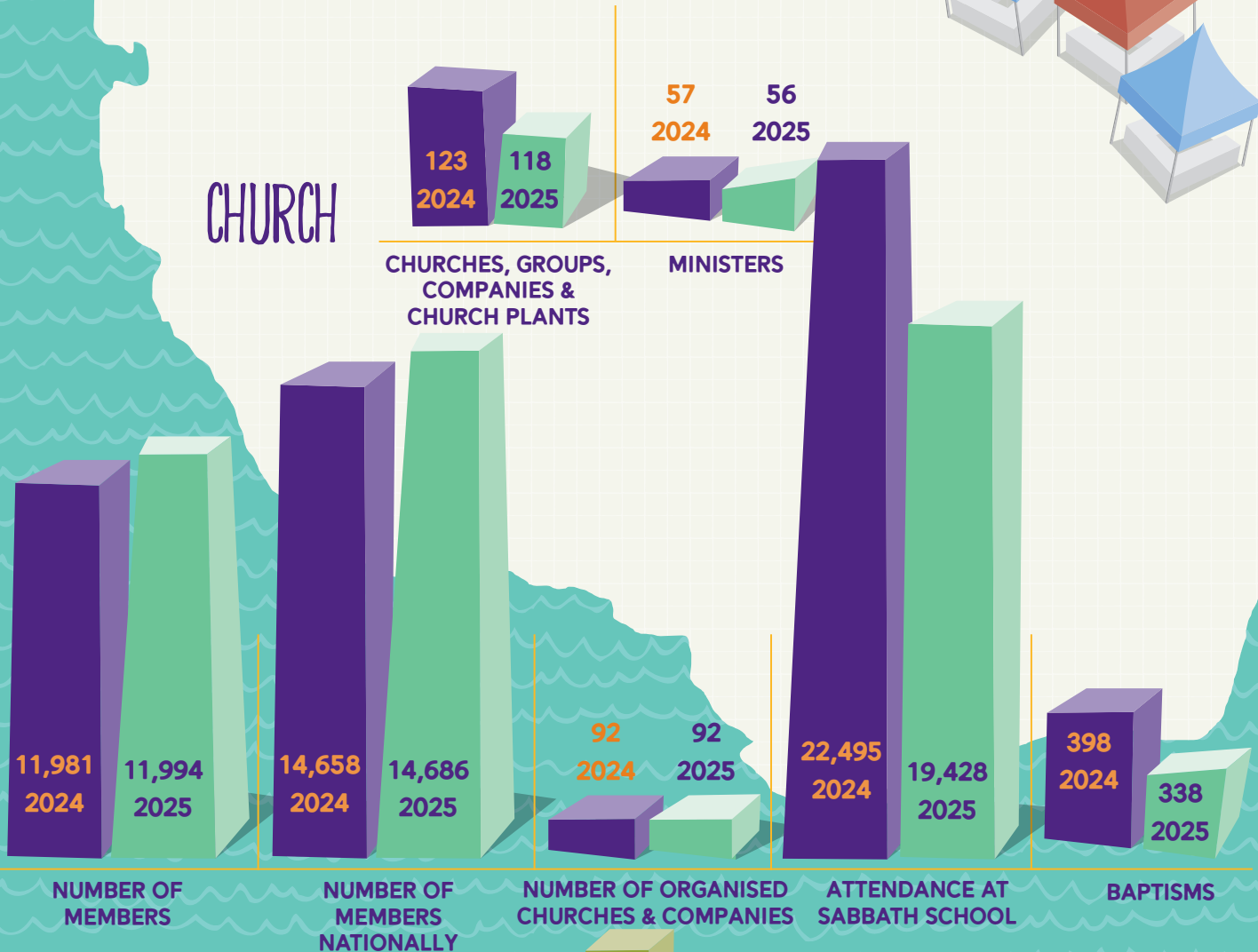
STATEMENT OF SERVICE

Performance

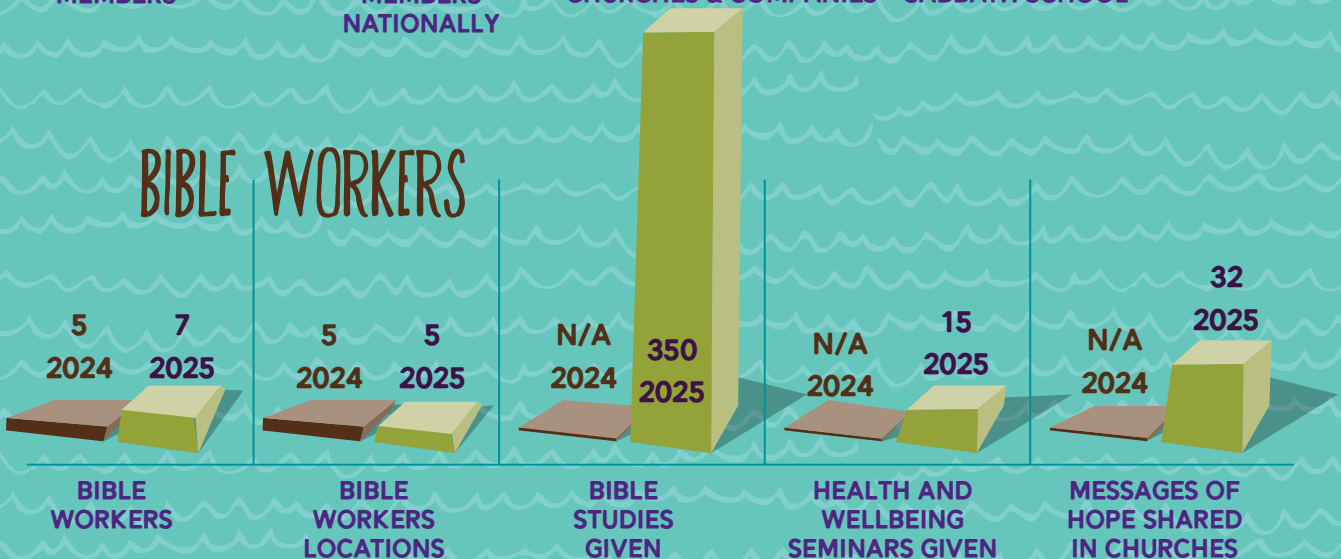
(YEAR IN NUMBERS)



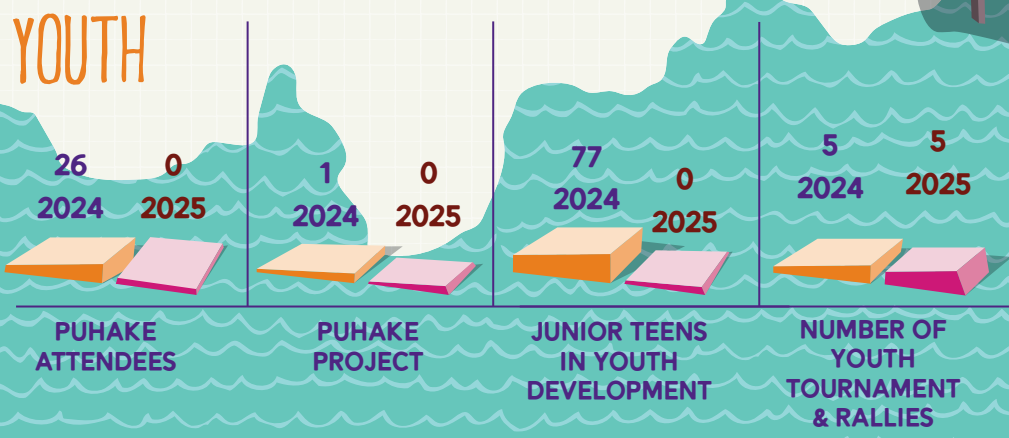
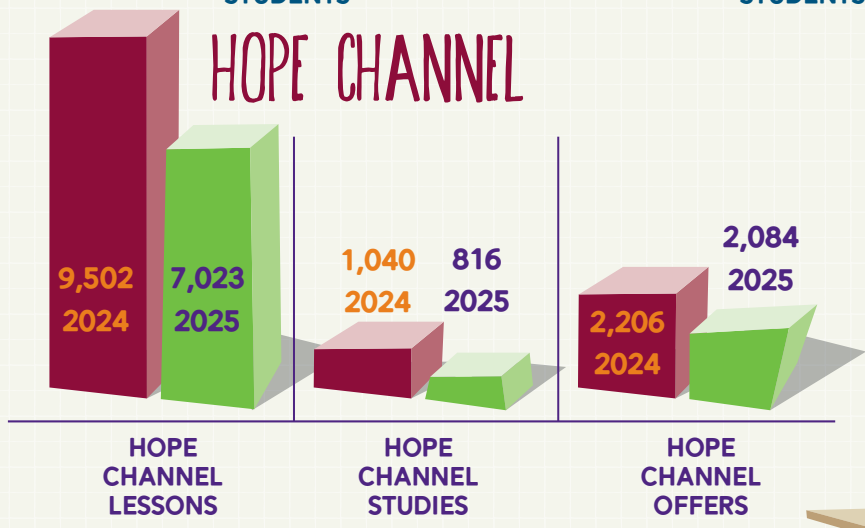
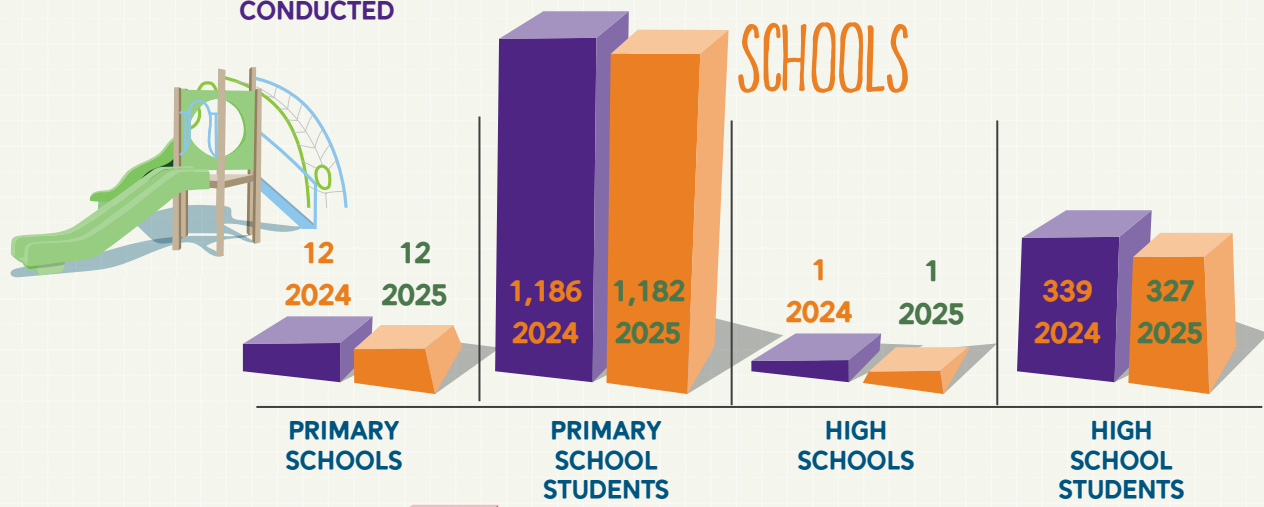
CHURCH



BIBLE WORKERS



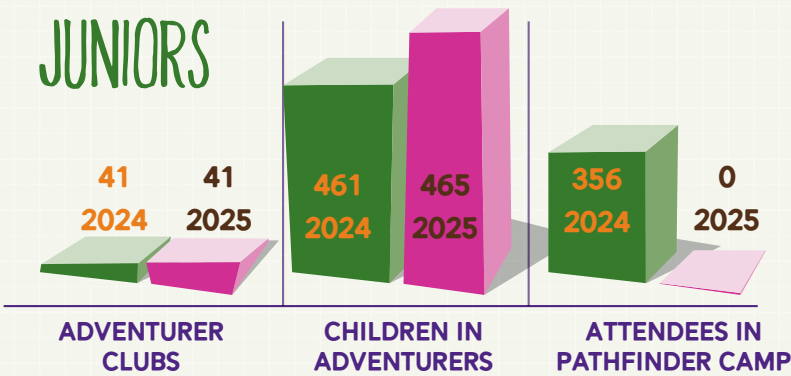
BIBLE WORKERS CONTINUED



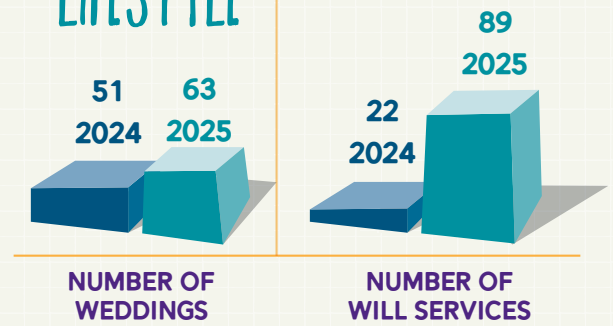
YOUTH CONTINUED



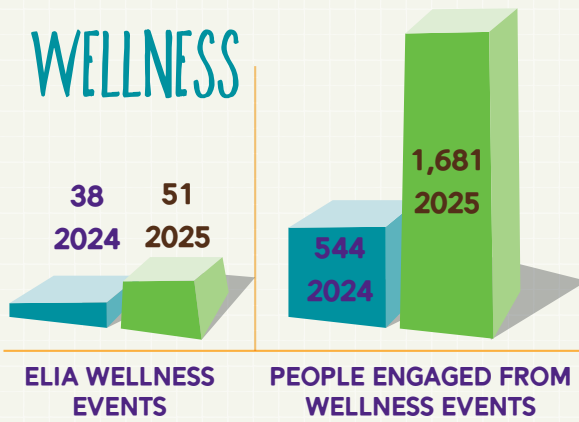
JUNIORS



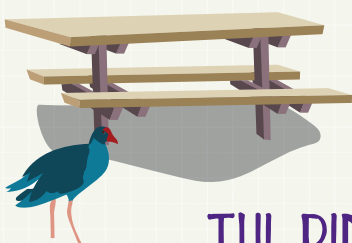
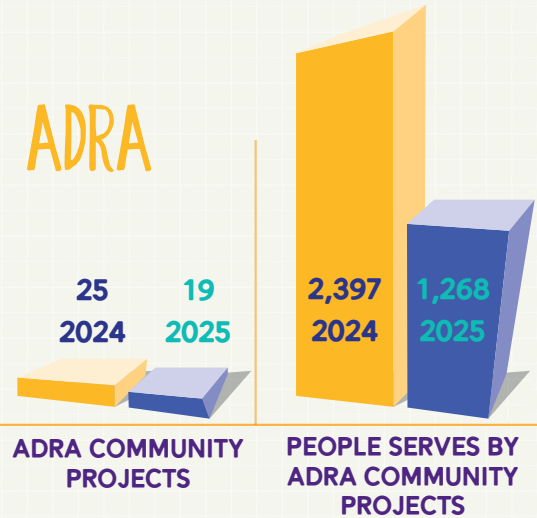
LIFESTYLE



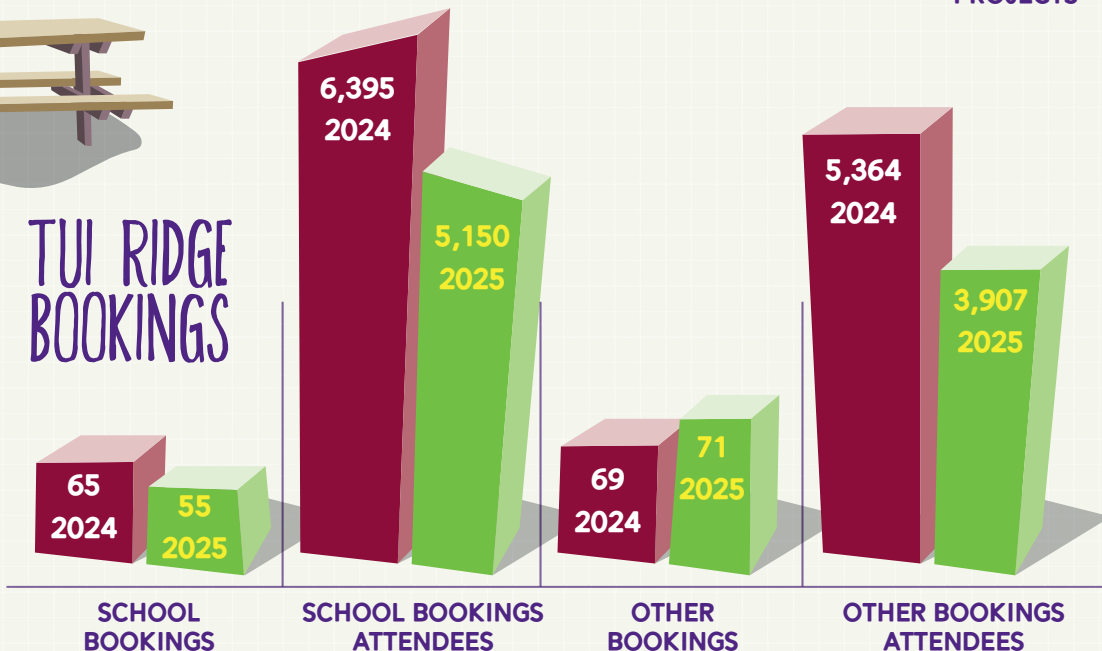
WELLNESS



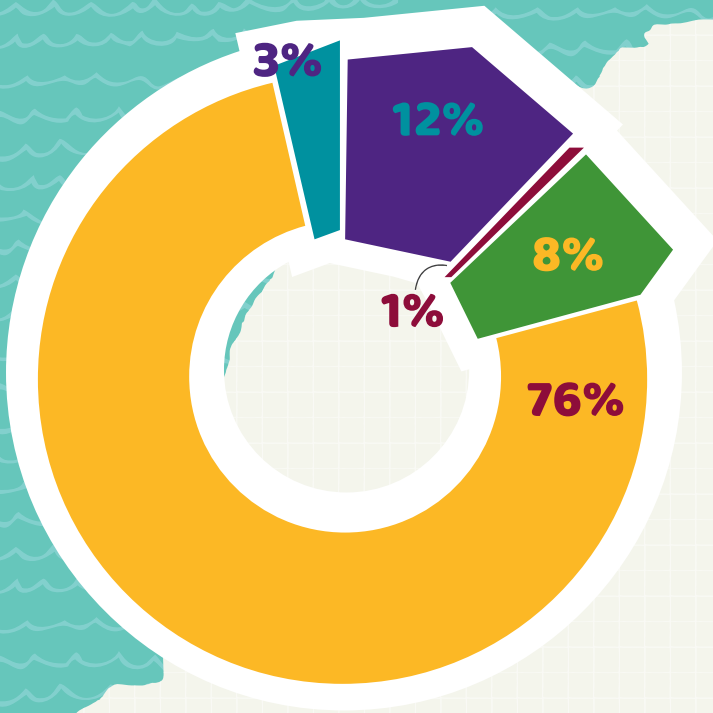
ADRA



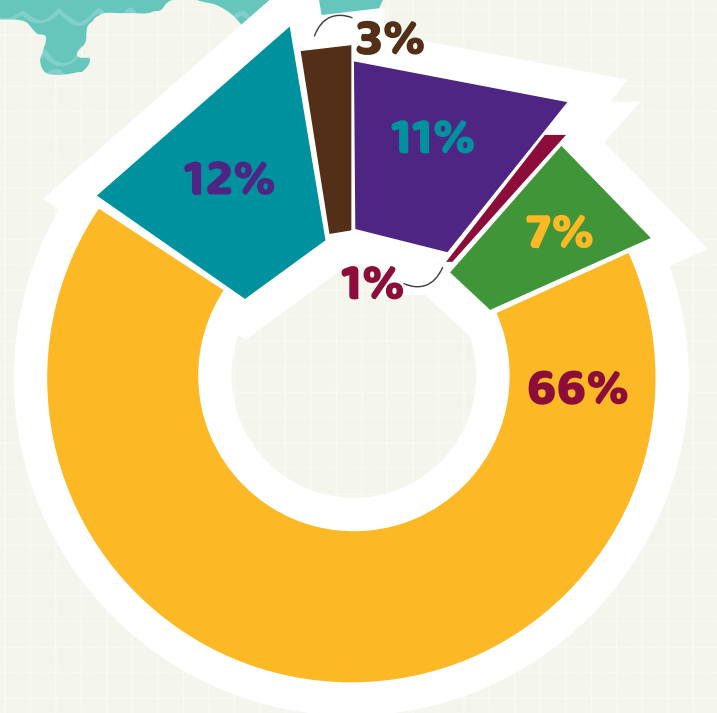
TUI RIDGE BOOKINGS



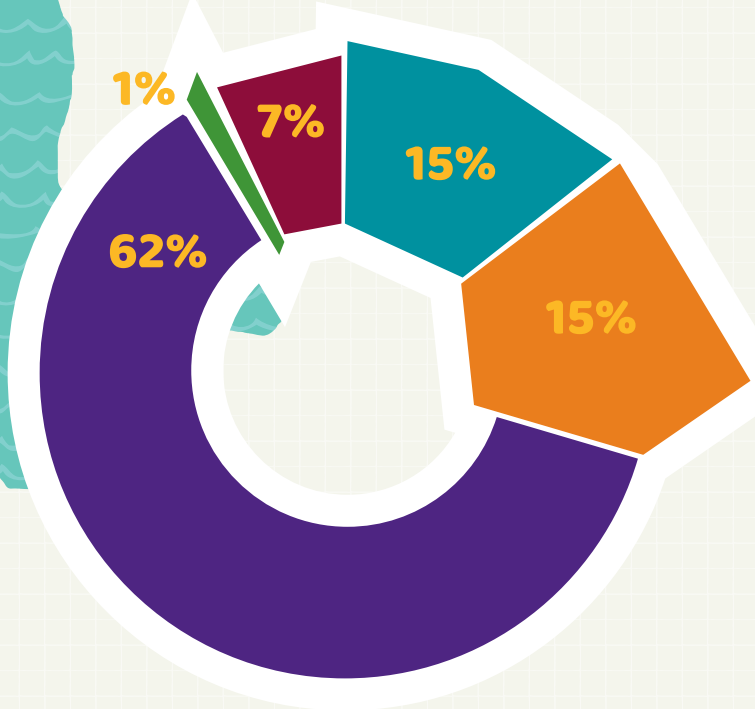
INCOME 2025



INCOME 2024



EXPENSES 2025



EXPENSES 2024

